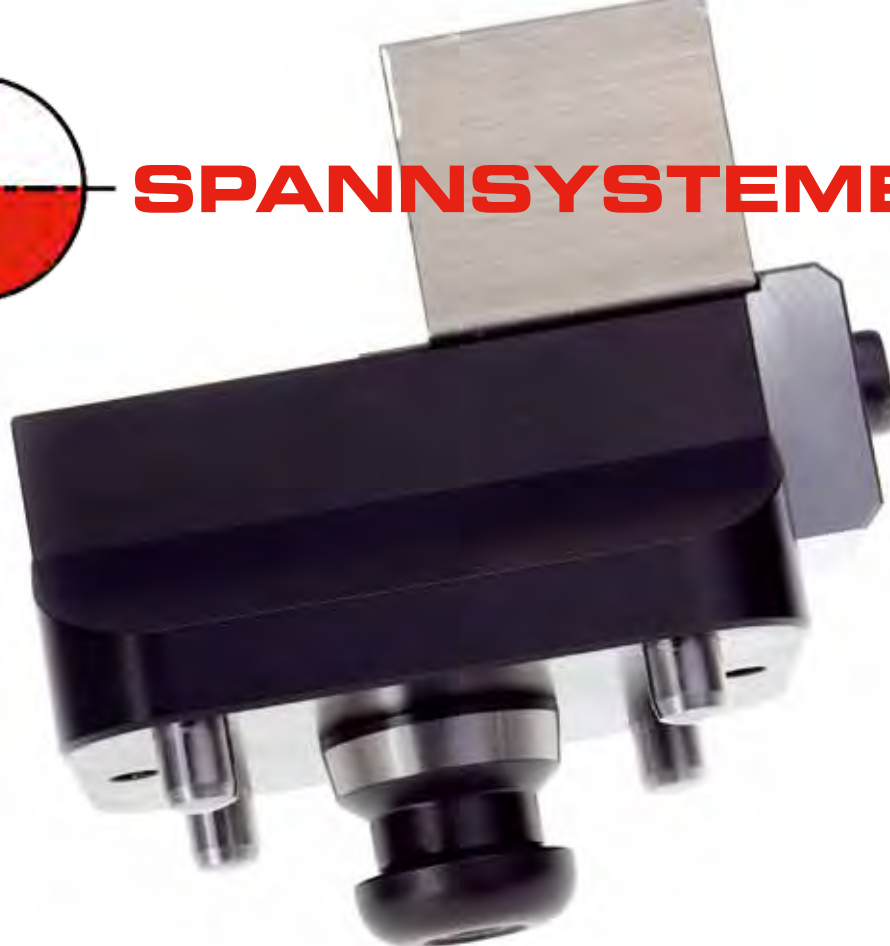


SPANNSYSTEME



Zeropoint clamping

Clamping towers

Clamping stations

Clamping pallets

Magnet clamping

Vacuum clamping

Mechanical clamping



innotool[®]

austria



ESTD. 1996
by innotool austria

Preface

„Our focus is the development of new technologies and the manufacturing of highest quality solutions to support your precision.“ (Johann Supanz, CEO)

innotool austria has formed over the years to specialize in solutions for manufacturing process. Core competences are construction and development of new products. The following focal points are important for us:

- Innovative solutions in order to optimize your production
- High quality products at economic prices
- Development, construction, production and testing done in-house
- Flexible manufacturing capabilities, modern machines and strong partners guarantee high quality in μ -machining
- Time savings during production because of zero point clamping systems, sophisticated applications and pallet systems

All innotool austria products are assembled, tested and shipped from our headquarter in Altsch which guarantees continuous quality assurance.

FOR YOUR PRECISION



innotool austria
GmbH & CoKG
Oberhub 11
6844 Altsch
Austria

T +43 5576 79040
F +43 5576 79041
office@innotool-austria.com
www.innotool-austria.com

CLAMPING TOWERS

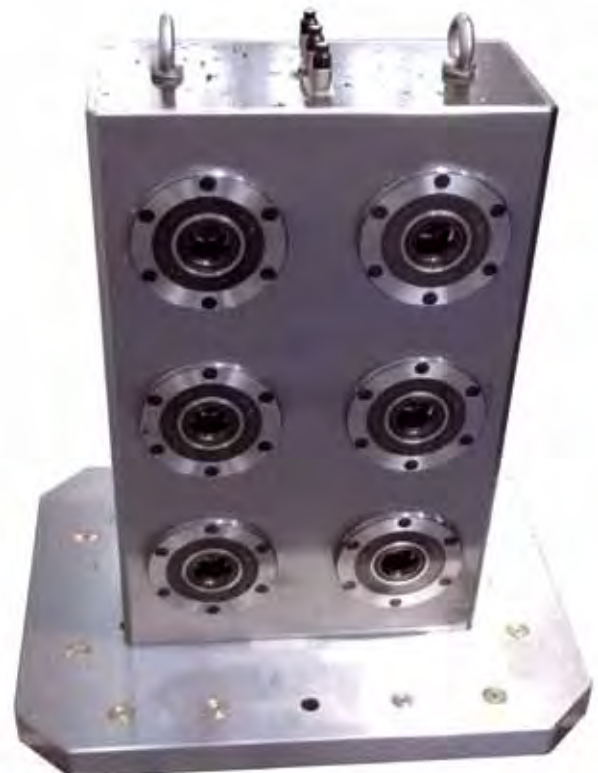


ROC® UNILOCK® Clamping towers

In combination with the proven UNILOCK Zeropoint Clamping System we offer Mineralcast towers in many different sizes. All Clamping towers are equipped with UNILOCK® EFM 138, Installation Flange Chucks with standard inside micrometer 7.874x7.874". The activation of the chucks will be done from the side. Mounting possibilities for the base plate will be done according to customers' requirements.



Item No.	Description
MG100.002	ROC® UNILOCK Clamping cross steelcover 270x270x450mm (LxWxH) UNILOCK chucks: 8
MG100.003	ROC® UNILOCK Clamping cross steelcover 270x270x650mm (LxWxH) UNILOCK chucks: 12
MG100.004	ROC® UNILOCK Clamping cube steelcover 238x238x450mm (LxWxH) UNILOCK chucks: 8
MG100.005	ROC® UNILOCK Clamping cube steelcover 238x238x650mm (LxWxH) UNILOCK chucks: 12
MG100.006	ROC® UNILOCK Double angle steelcover 220x399x450mm (LxWxH) UNILOCK chucks: 8 Inside micrometer: 200mm
MG100.007	ROC® UNILOCK Double angle steelcover 220x399x650mm (LxWxH) UNILOCK chucks: 12 Inside micrometer: 200mm
MG100.008	ROC® UNILOCK Double angle steelcover 220x499x450mm (LxWxH) UNILOCK chucks: 8 Inside micrometer: 250mm
MG100.009	ROC® UNILOCK Double angle steelcover 220x499x650mm (LxWxH) UNILOCK chucks: 12 Inside micrometer: 250mm



DTL 200 ‚The slim one‘

Duo-Towers-Light including two Air-Connections G 1/4" and 2x2 ESM 138 chucks (centerline distance 200mm/7.874"). Each face is activated individually and chucks open and close in tandem. Two side plates provide support without adding excessive obstructions or weight.

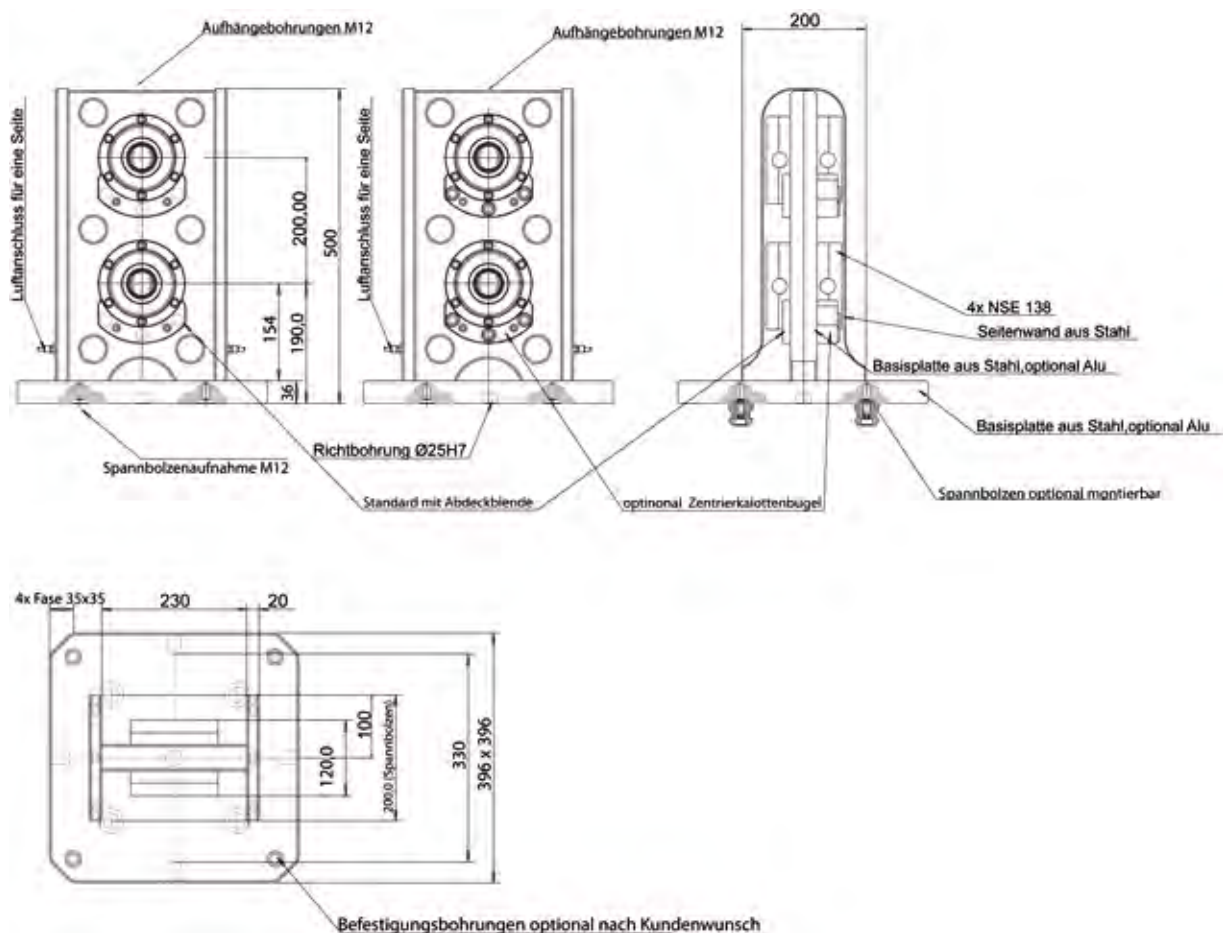
The ground plate and the base plate are available in steel or aluminum. The side walls are made out of steel.



Item No.	Specifications
UL500.074	Retention force (M10): 35'000 N Retention force (M12): 50'000 N Retention force (M16): 75'000 N Repeatability: <0,005 mm Air-Connection (2x): G 1/4" Weight: 73,50 kg (Aluminum)

Scope of delivery

DTL 200 without Clamping knobs and mounting screws.



ROC® Grid clamping towers

As an alternative to common steel-grid towers, we offer grid towers in different sizes made of a steel cover, filled with ROC® Mineral cast. The grid towers include position bushings (dia. 12-F7) with M12 thread as well as an eye bolt and a ground plate. The grid bores run symmetrically through the middle of the device and are available in both grid 40 and 50.

Item No.	Description
MG100.010	ROC® Grid clamping cross 300x300x600mm (LxWxH) Grid: 40mm, Thread: M12
MG100.011	ROC® Grid clamping cross 300x300x600mm (LxWxH) Grid: 50mm, Thread: M12
MG100.012	ROC® Grid clamping cross 300x300x750mm (LxWxH) Grid: 40mm, Thread: M12
MG100.013	ROC® Grid clamping cross 300x300x750mm (LxWxH) Grid: 50mm, Thread: M12
MG100.014	ROC® Grid clamping cube with steelcover 300x300x600mm (LxWxH) Grid: 40mm, Thread: M12
MG100.015	ROC® Grid clamping cube with steelcover 300x300x600mm (LxWxH) Grid: 50mm, Thread: M12
MG100.016	ROC® Grid clamping cube with steelcover 300x300x750mm (LxWxH) Grid: 40mm, Thread: M12
MG100.017	ROC® Grid clamping cube with steelcover 300x300x750mm (LxWxH) Grid: 50mm, Thread: M12

Item No.	Description
MG100.018	ROC® Grid double angle with steelcover 400x200x600mm (LxWxH) Grid: 40mm, Thread: M12
MG100.019	ROC® Grid double angle with steelcover 400x200x600mm (LxWxH) Grid: 50mm, Thread: M12
MG100.020	ROC® Grid double angle with steelcover 400x200x750mm (LxWxH) Grid: 40mm, Thread: M12
MG100.021	ROC® Grid double angle with steelcover 400x200x750mm (LxWxH) Grid: 50mm, Thread: M12
MG100.022	ROC® Grid double angle with steelcover 500x200x750mm (LxWxH) Grid: 40mm, Thread: M12
MG100.023	ROC® Grid double angle with steelcover 500x200x750mm (LxWxH) Grid: 50mm, Thread: M12
MG100.024	ROC® Grid double angle with steelcover 630x200x800mm (LxWxH) Grid: 40mm, Thread: M12
MG100.025	ROC® Grid double angle with steelcover 630x200x800mm (LxWxH) Grid: 50mm, Thread: M12

Optional

All ROC® Grid clamping towers are also available with position-socket dia. 16-F7 and M16 thread for grid 50.

UNILOCK Special towers

After customer requirements we also produce Clamping towers with special dimensions and customized equipment.





innotool austria
GmbH & CoKG
Oberhub 11
6844 Altsch
Austria

T +43 5576 79040
F +43 5576 79041
office@innotool-austria.com
www.innotool-austria.com