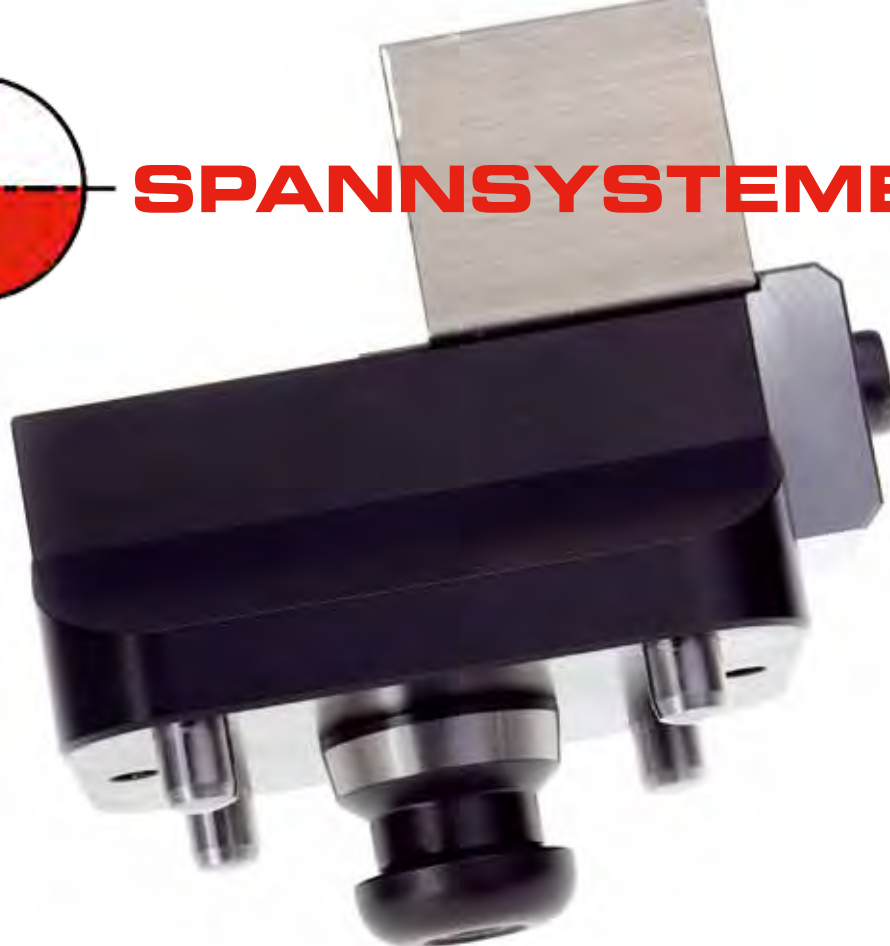


# SPANNSYSTEME



Zeropoint clamping

Clamping towers

Clamping stations

Clamping pallets

Magnet clamping

Vacuum clamping

Mechanical clamping



# innotool<sup>®</sup>

austria



ESTD. 1996  
by innotool austria

# Preface

*„Our focus is the development of new technologies  
and the manufacturing of highest quality solutions  
to support your precision.“ (Johann Supanz, CEO)*

innotool austria has formed over the years to specialize in solutions for manufacturing process. Core competences are construction and development of new products. The following focal points are important for us:

- Innovative solutions in order to optimize your production
- High quality products at economic prices
- Development, construction, production and testing done in-house
- Flexible manufacturing capabilities, modern machines and strong partners guarantee high quality in  $\mu$ -machining
- Time savings during production because of zero point clamping systems, sophisticated applications and pallet systems

All innotool austria products are assembled, tested and shipped from our headquarter in Altsch which guarantees continuous quality assurance.

## FOR YOUR PRECISION



innotool austria  
GmbH & CoKG  
Oberhub 11  
6844 Altsch  
Austria

T +43 5576 79040  
F +43 5576 79041  
[office@innotool-austria.com](mailto:office@innotool-austria.com)  
[www.innotool-austria.com](http://www.innotool-austria.com)

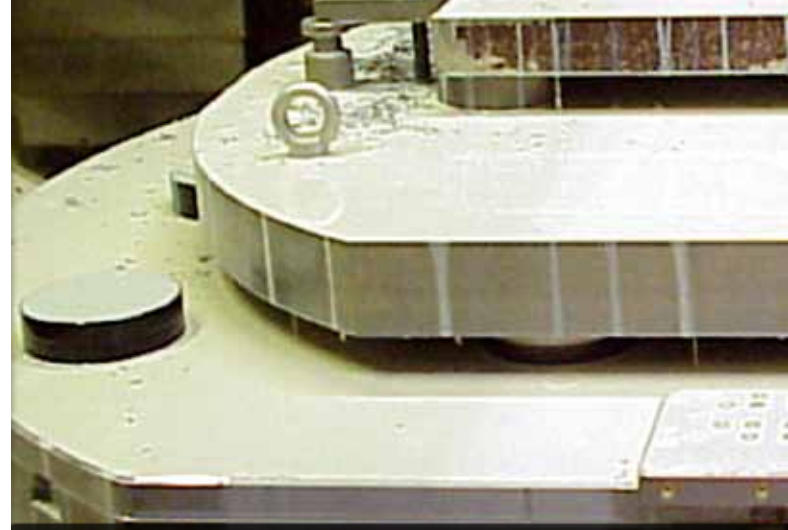
**C  
L  
A  
M  
P  
I  
N  
G  
  
S  
T  
A  
T  
I  
O  
N  
S**





## MLM 150 ,The little light one‘

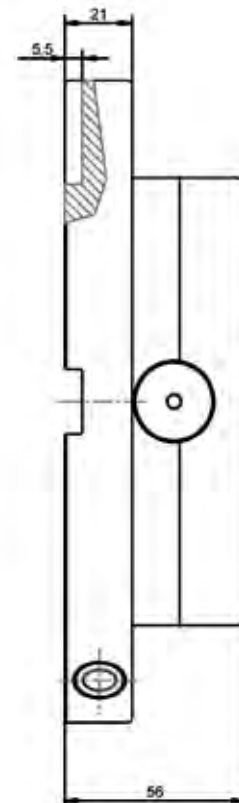
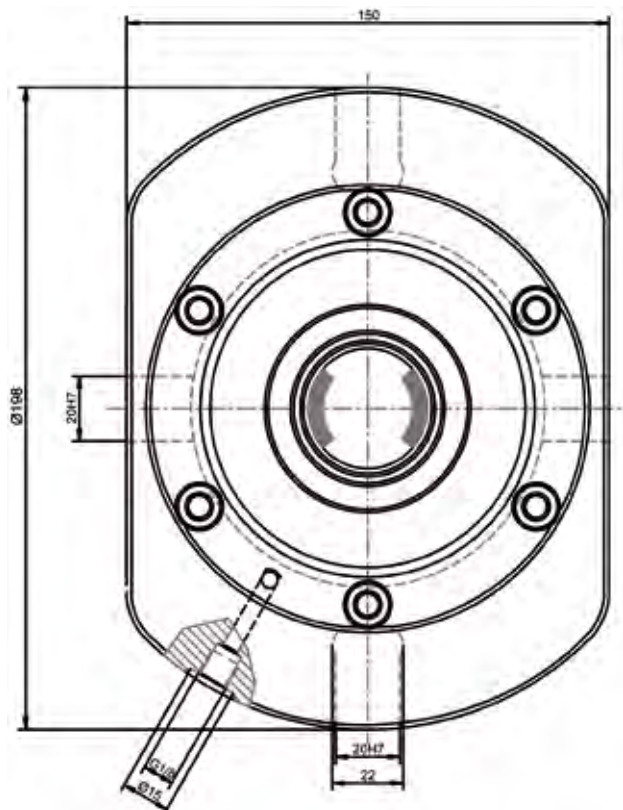
Four adjustment slots 20H6 (90° shifted) allow the Mono-Clamping-Station-Light to be quickly positioned on T-slot tables. Chucks are installed individually and connected via a side air connection. With single MLM 150 applications, orientation requires an external timing feature. Additional MLM 150 clamping chuck can be used to create an array and provide orientation.

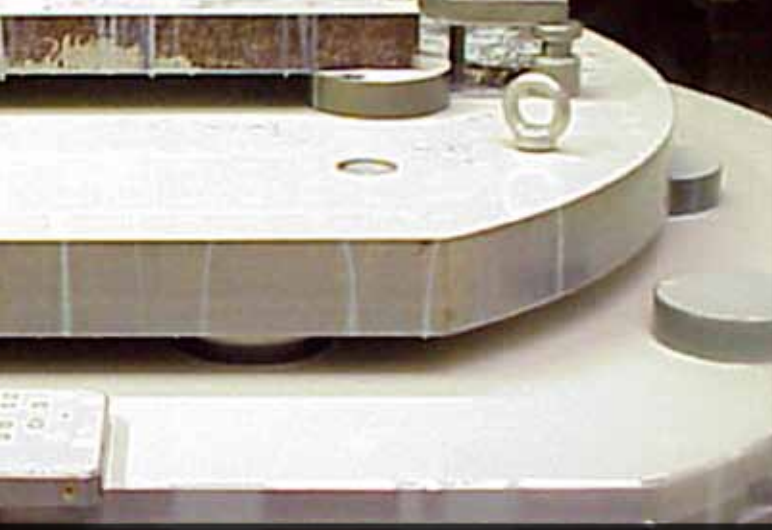


Item No.	Specifications
UL500.046	Retention force (M10): 35'000 N Retention force (M12): 50'000 N Retention force (M16): 75'000 N Repeatability: <0,005 mm Air-Connection: G 1/8" Weight: 6,95 kg

### Scope of delivery

MLM 150 without T-slot nuts and mounting screws.





## DLM 200 ,The big light one'

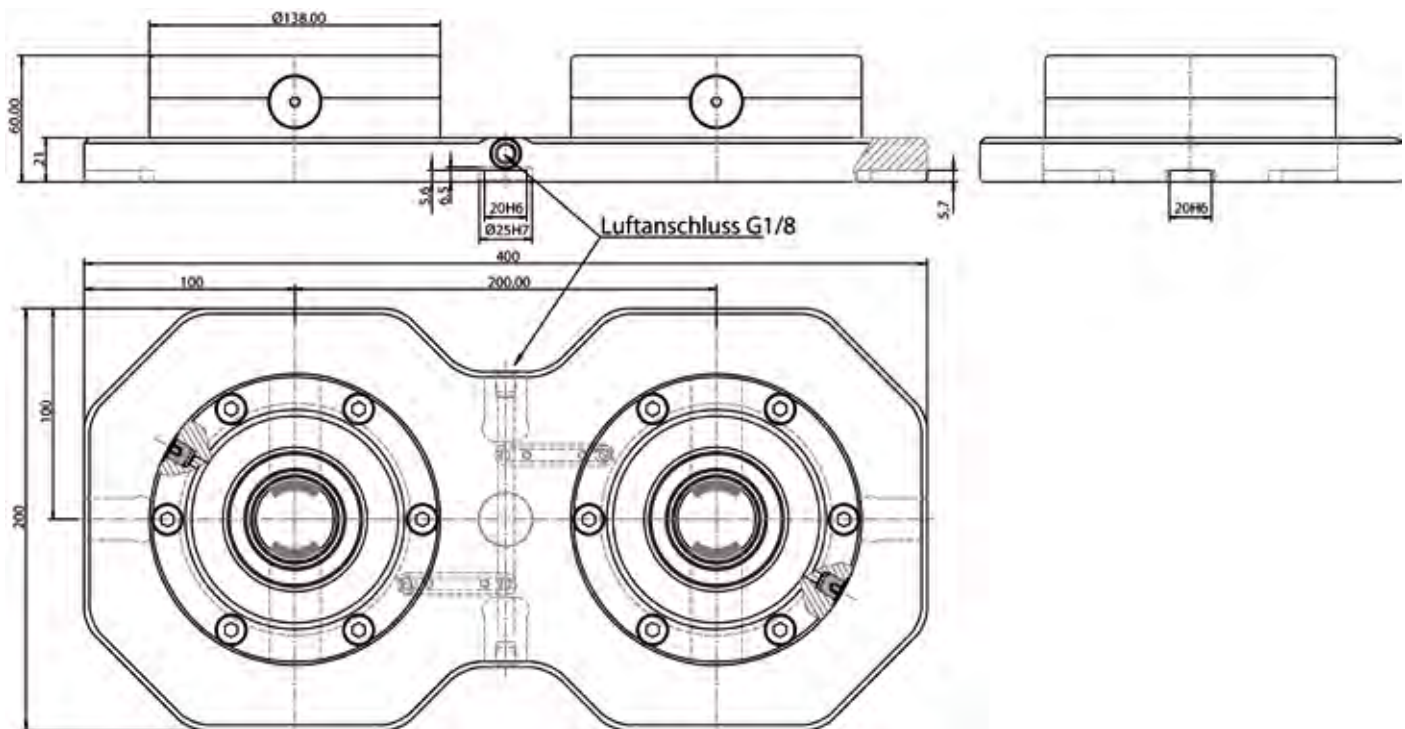
The Duo-Clamping-Station-Light has been developed with a Clamping chuck centerline spacing of 200mm/7.874", a system-height of 60mm/2.362" and four T-slots, 20H6 (90° shifted).

Included in the steel base plate is one G1/8" Air-connection for simultaneous operation of both ESM 138 chucks.

Item No.	Specifications
UL500.054	Retention force (M10): 35'000 N Retention force (M12): 50'000 N Retention force (M16): 75'000 N Repeatability: <0,005 mm Air-Connection: G 1/8" Weight: 16,90 kg

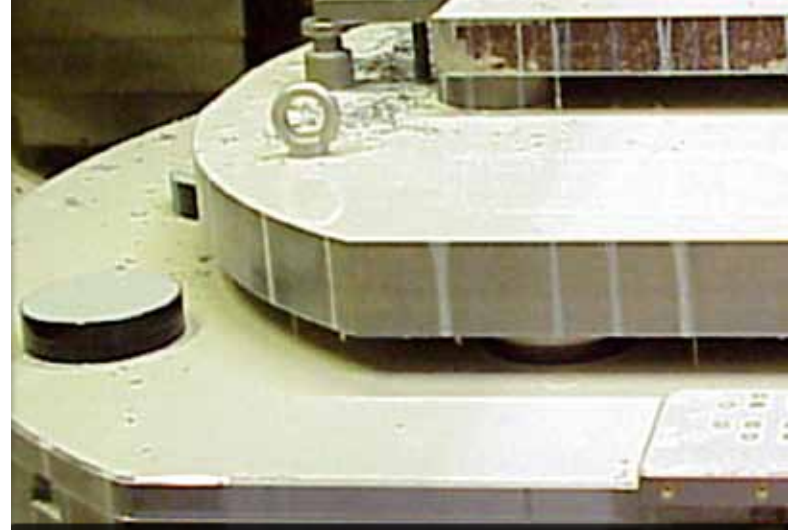
### Scope of delivery

DLM 200 without T-slot nuts and mounting screws.



## MCM 150 ,The little compact one‘

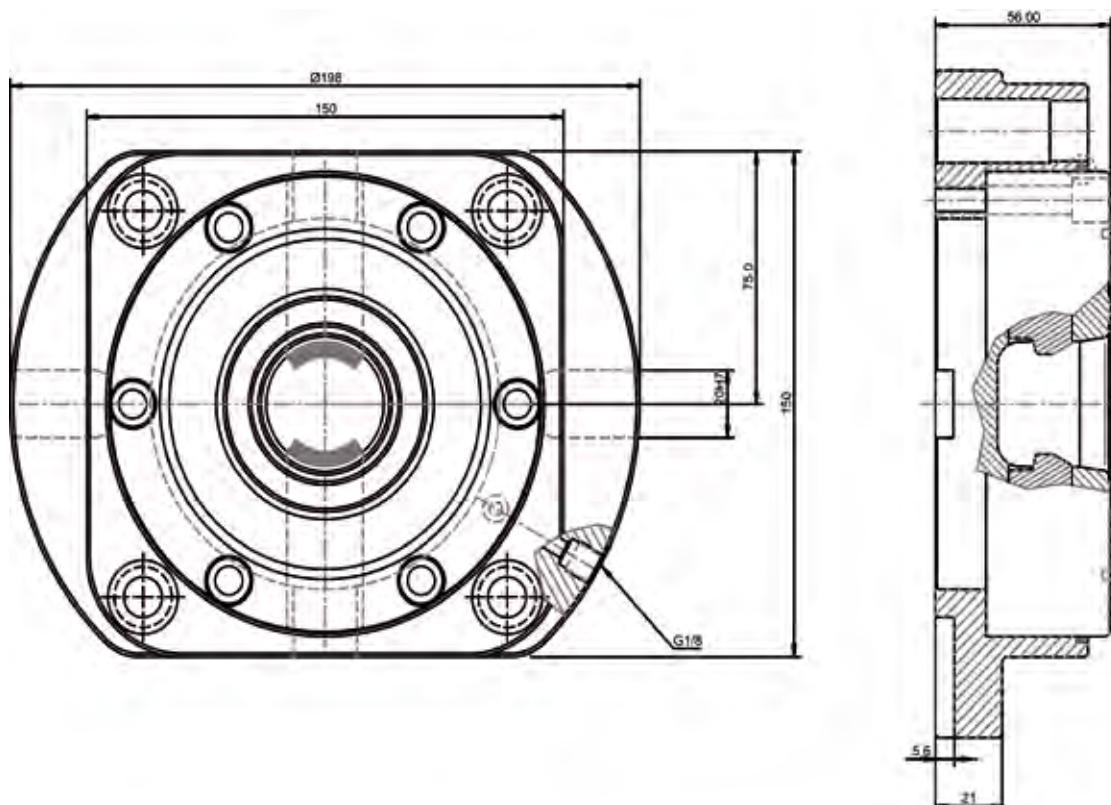
Four T-slots, 20H6 (90° shifted) allow for quick adaptation to machine tables. The perimeter base plate provides a solid platform for mounting the MCM 150 into your work cell. An individual assembly is possible because of the air connection G 1/8" on the side. The Clamping station can be used as a single station or in combination with more MCM 150s.



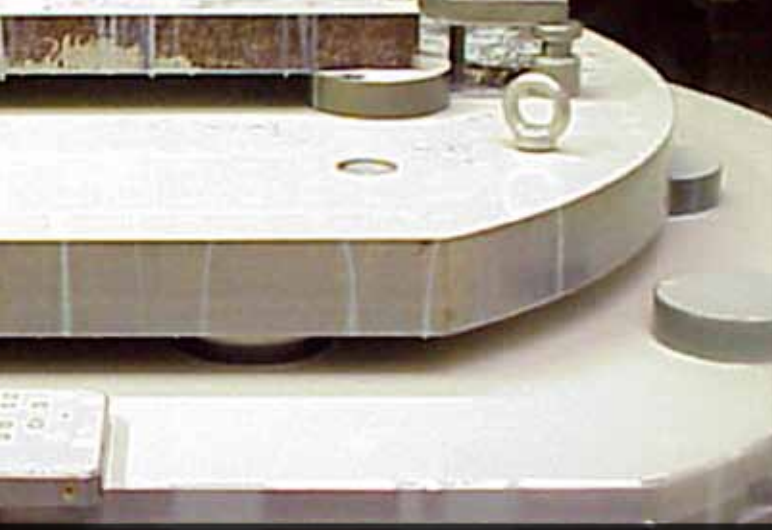
Item No.	Specifications
UL500.050	Retention force (M10): 35'000 N Retention force (M12): 50'000 N Retention force (M16): 75'000 N Repeatability: <0,005 mm Air-Connection: G 1/8" Weight: 7,90 kg

### Scope of delivery

MCM 150 without T-slot nuts and mounting screws.







## DCM 200 ,The big compact one‘

The Duo-Clamping-Station-Compact packages 2 Clamping chucks on a centerline spacing of 200mm/7.874". The overall height is 56mm/2.204" and the baseplate has four T-slot notches, 20H6 (90° shifted).

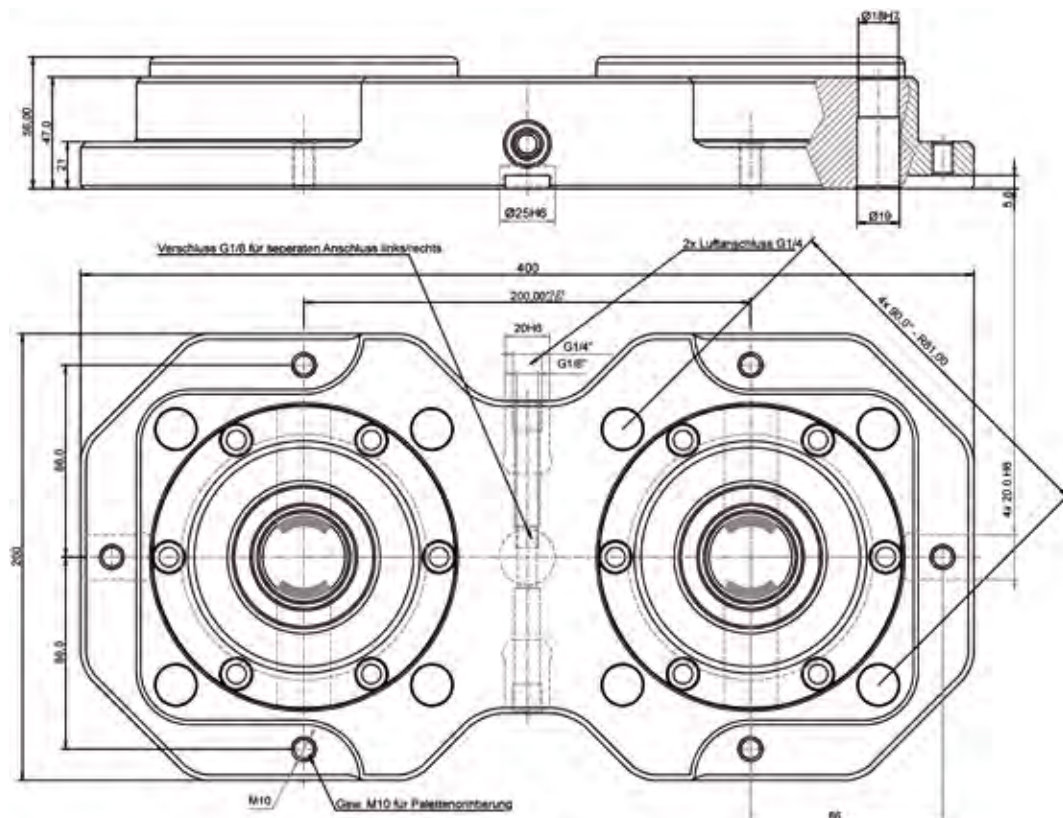
Included in the steel plate is one G1/8" air-connection for both ESM 138 chucks. The Air-Connection can be separated in the middle for a left or right air-connection.



Item No.	Specifications
UL500.058	Retention force (M10): 35'000 N Retention force (M12): 50'000 N Retention force (M16): 75'000 N Repeatability: <0,005 mm Air-Connection: G 1/8" Weight: 20,85 kg

### Scope of delivery

DCM 200 without T-slot nuts and mounting screws.

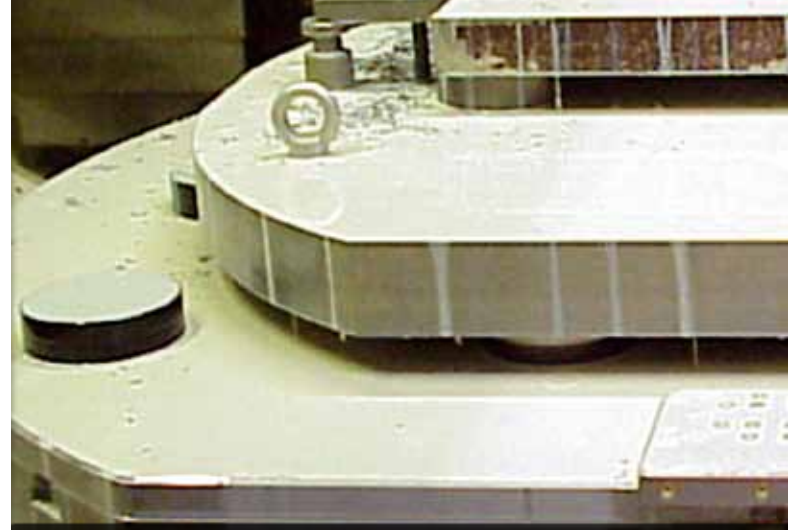




## QLM 400 ,The Quattro‘

The Quattro-Clamping-Station-Light has 4 mounted ESM 138 chucks, adjusted with a Clamping chuck centerline distance of 200x200mm/ 7.874"x 7.874".

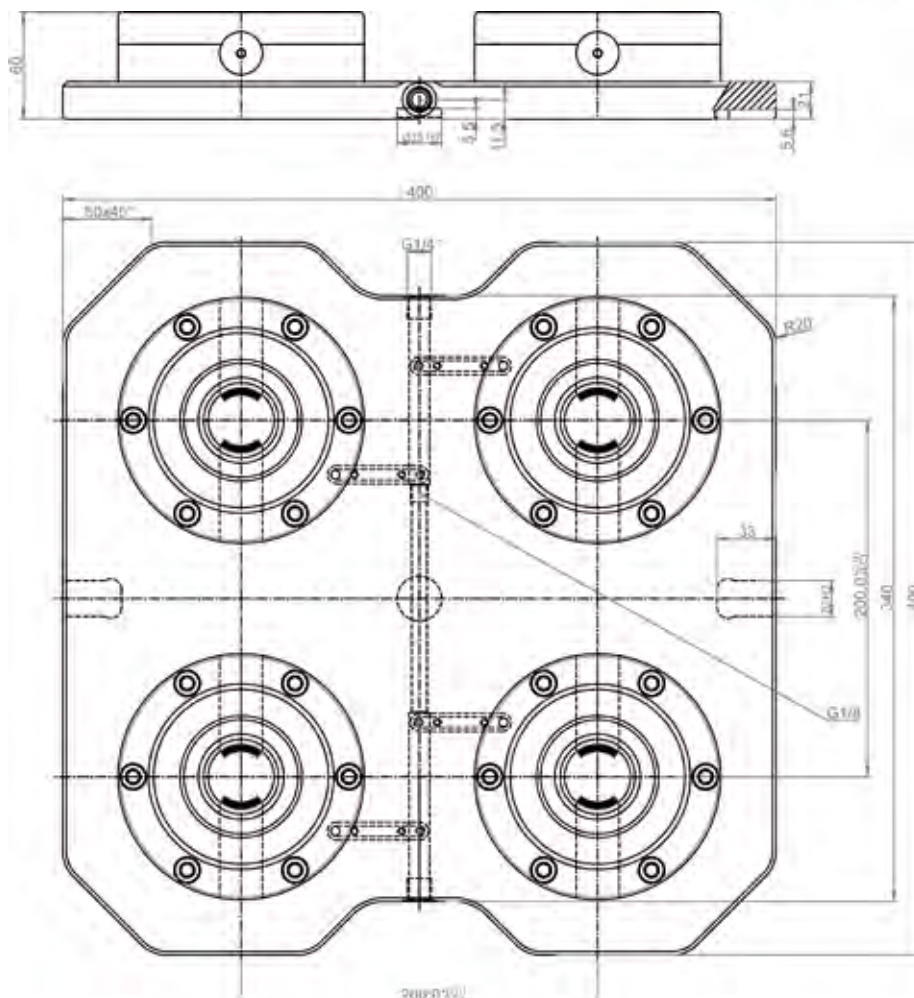
The steel plate includes two G1/4" Air-Connections, front and back. One is closed by default.

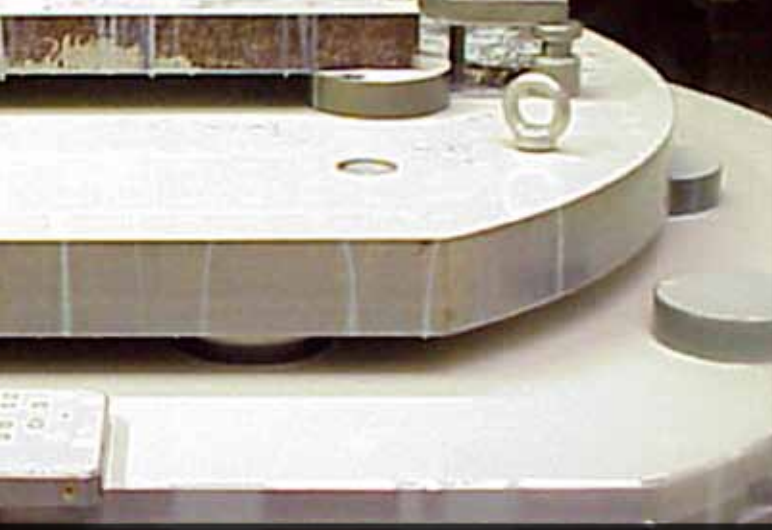


Item No.	Specifications
UL500.067	Retention force (M10): 35'000 N Retention force (M12): 50'000 N Retention force (M16): 75'000 N Repeatability: <0,005 mm Air-Connection: G 1/8" Weight: 35,50 kg

### Scope of delivery

QLM 400 without T-slot nuts and mounting screws.



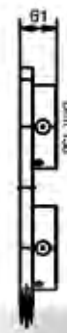
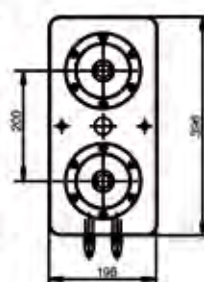
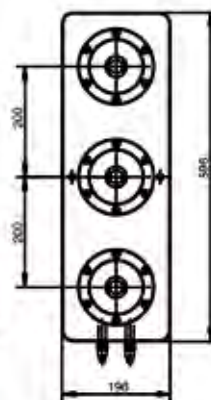
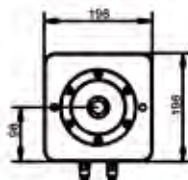
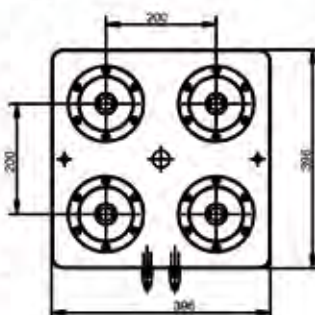
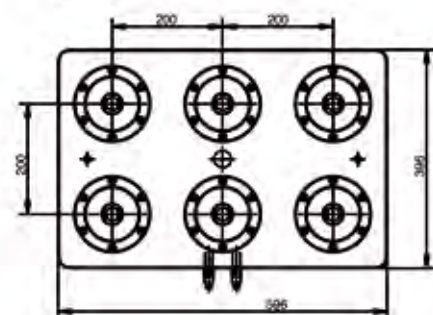
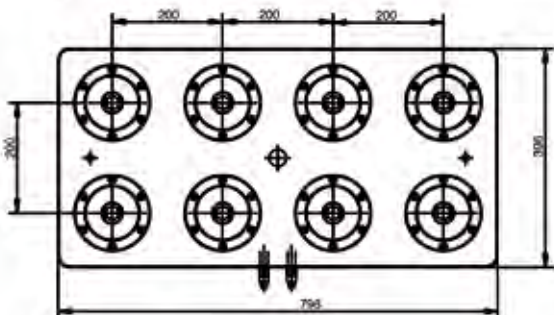
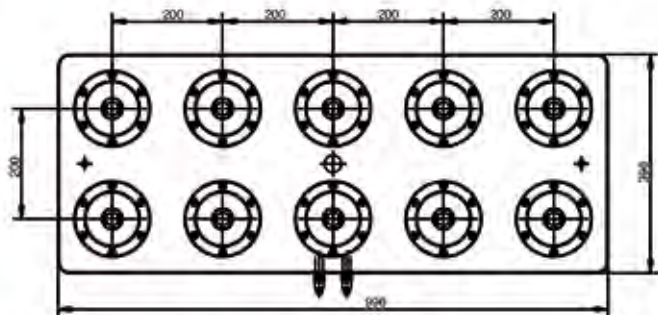


## UNILOCK R „The simple ones“

UNILOCK R-series use the proven ESM 138 Installation clamping chuck. They are delivered complete for being assembled on machine tables right away. UNILOCK R Clamping stations include an unlock- and turbo function as well as central orientation bore holes.

The turbo function supports the spring power with which higher machine parameters can be accomplished. A 200mm gird and the innotool austria clamping system ensure a changing in seconds with a high repeatability for pallets, magnetic parts, devices and much more.

On request, mounting bore holes which match a special machine table can be added on UNILOCK R Clamping stations.



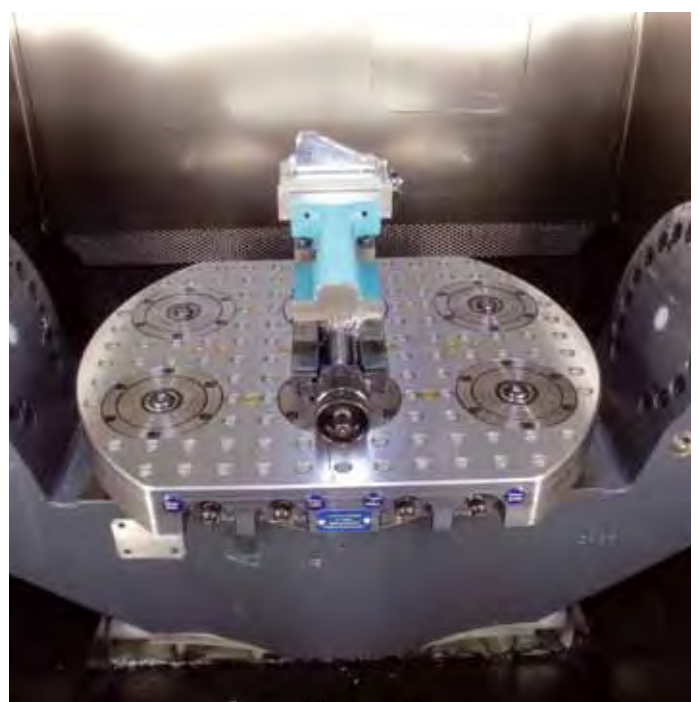
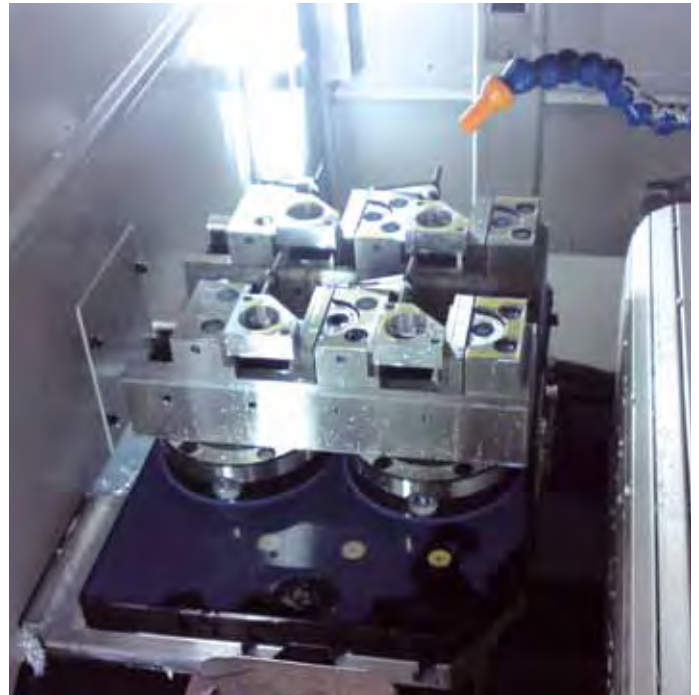
Item No.	Description
UL500.900	R1, Single clamping station 196x196mm incl. 1x ESM 138
UL500.901	R2, Double clamping station 396x196mm incl. 2x ESM 138
UL500.902	R3, Tripple clamping station 596x196mm incl. 3x ESM 138
UL500.903	R4, Quadruple clamping station 396x396mm incl. 4x ESM 138
UL500.904	R6, Sixfold clamping station 596x396mm incl. 6x ESM 138
UL500.905	R8, Eightfold clamping station 796x396mm incl. 8x ESM 138
UL500.906	R10, Tenfold clamping station 996x396mm incl. 10x ESM 138



## UNILOCK Clamping stations

Every machine table has special characteristics which we include in the construction of our Clamping stations. Like this, no Clamping station can be combined with another one.

Due to our standardised process we are able to produce also spezial Clamping station in a short time.







innotool austria  
GmbH & CoKG  
Oberhub 11  
6844 Altsch  
Austria

T +43 5576 79040  
F +43 5576 79041  
office@innotool-austria.com  
www.innotool-austria.com